

KG Instant Print

Automated Photo Printing Software



User Guide

Version 2.0

Introduction	1
What is KG Instant Print?	1
Getting Started.....	1
Installing KG Instant Print	1
After Installation	2
Registering Software.....	3
KG Instant Print Basics.....	4
Printing Photos.....	4
Printing Photos to Multi-cut Paper.....	6
Printing Overlays on Photos	6
Printing Filenames on Photos	8
Pausing Printing.....	9
Software Options.....	9
Files.....	9
Overlay.....	11
Printer.....	12
Spooler	13

Introduction

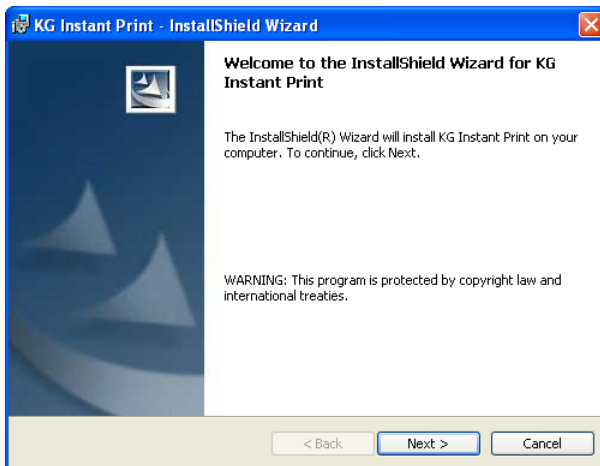
What is KG Instant Print?

The KG Instant Print software provides a simple interface to automatically format and print the contents of a designated **Instant Print Directory** (Hot Folder). The software sits in your system tray and monitors the contents of a designated **Instant Print Directory**. Files that are copied to the spool directory are automatically formatted and printed on a selected photo printer. Advanced features, such as image overlays, can be applied to the formatted print to enable photo frames or event watermarks.

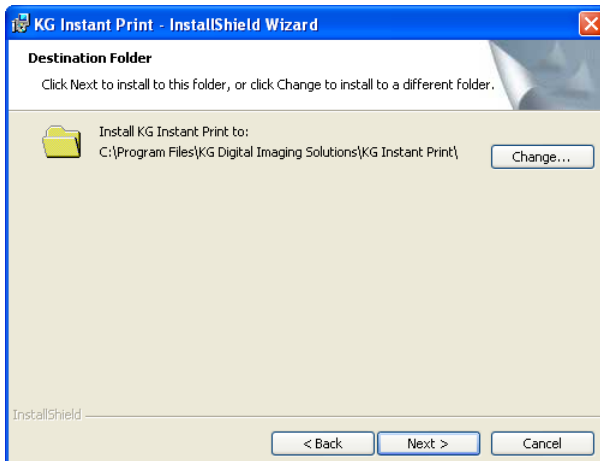
Getting Started

Installing KG Instant Print

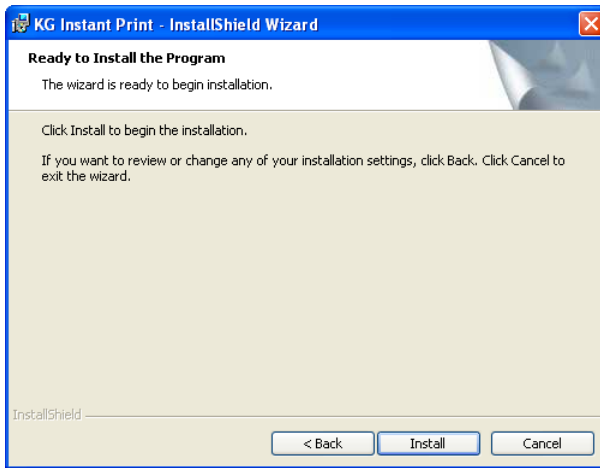
To begin installing the software, locate the software setup file using Windows explorer and double-click the setup file. Setup will start and guide you through the installation process.



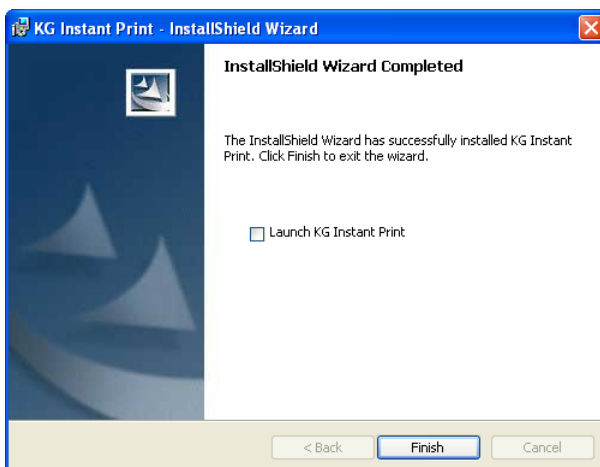
1. Click **Next**.



2. Review the software installation directory and make any necessary changes.
3. Click **Next**.



4. Click **Install** to begin the software installation. The setup wizard will install the software using the provided setup options.

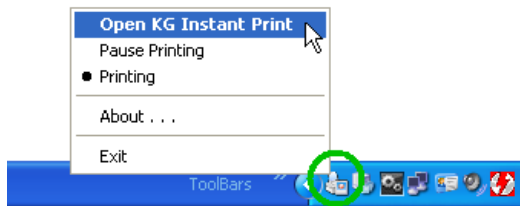


5. The completion dialog will be displayed at the end of software setup.
6. Click **Finish** to complete the installation.

After Installation

The software can now be run by opening the Start/Programs/KG Digital Imaging Solutions/KG Instant Print folder and selecting the KG Instant Print item. The first time the software is run the options window will be displayed. Review the current software options and make the necessary changes to reflect your desired print environment. Pay special attention to the printer settings located in the Printer page. Make sure the proper printer and print size has been selected. After making changes to the software options, click **Apply** to save the current settings.

If the software option window is not displayed, right-click the KG Instant Print icon located in the system tray and select the ‘Open KG Instant Print’ option.



Registering Software

The KG Instant Print software is free to use if you purchased a supported printer from an authorized dealer. Software registration is required to use the software beyond the 14 day trial period. To ensure continued use of the software, obtain a serial number by visiting www.kgdigital.com/instantprint-reg.php to complete a brief registration form and receive a serial number. Store a copy of the serial number in a safe place in the event the software must be reinstalled.

KG Instant Print Basics

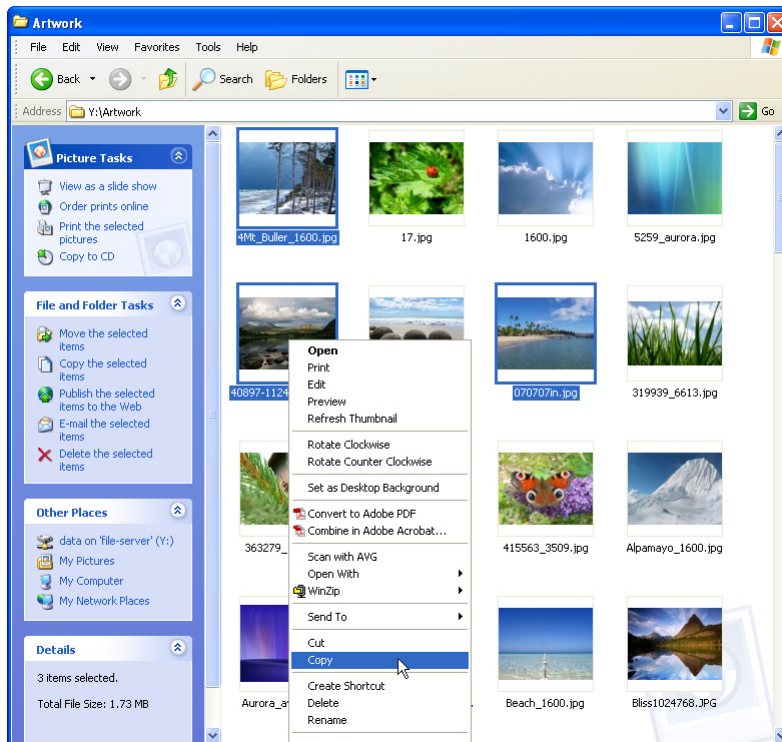
Printing Photos

Photos are printed by simply copying photos to the software's **Instant Print Directory**. If you are using a digital camera, you can either wirelessly send the images (if camera and computer are equipped), or copy photos directly from the camera or camera's memory cards to the **Instant Print Directory** to be automatically printed.

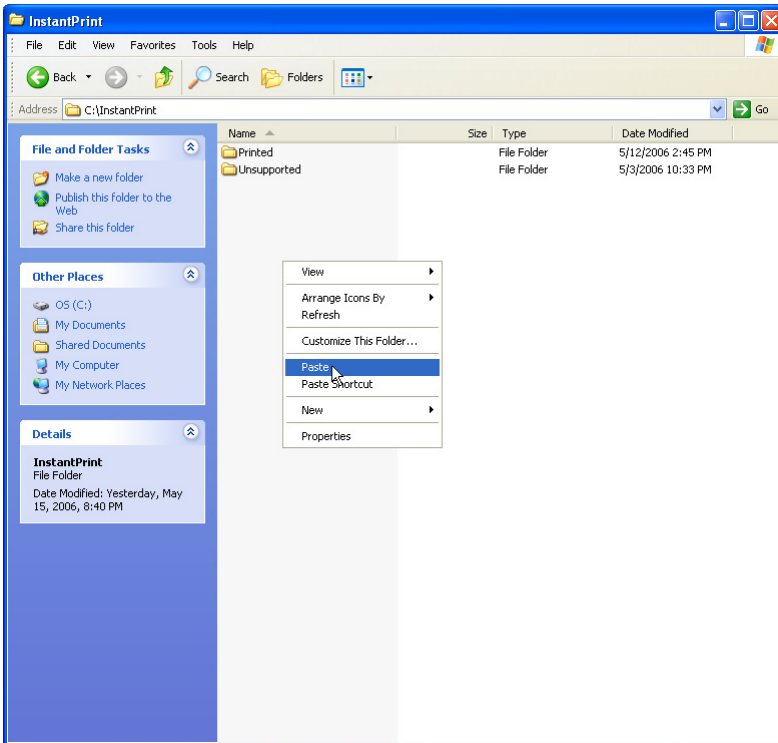
Windows Explorer can be used to display thumbnail previews so you can select which photos you would like to copy to the **Instant Print Directory**. Multiple photos can be selected by ctrl+left-clicking each photo. Once the photo group has been selected, right-click any of the selected photos and select Copy. Then open the **Instant Print Directory**, right-click and select Paste. The photos will be copied to the **Instant Print Directory** and begin printing.

Advanced software can be used in conjunction with the KG Instant Print Software to automatically move files into the **Instant Print Directory** based on your print environment.

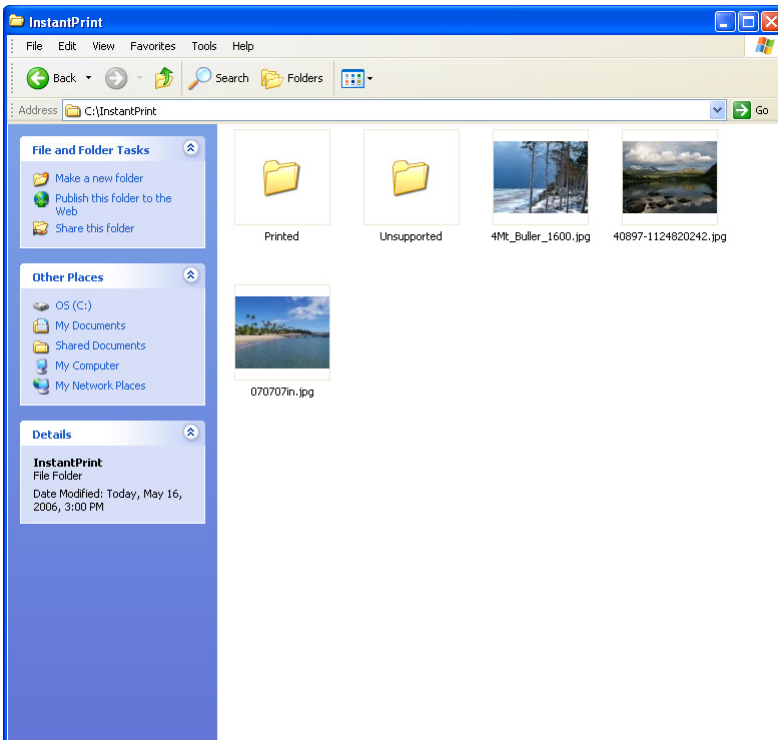
File copy example:



1. Select files to print by ctrl+left-clicking each photo.
2. Right-click any of the selected photos and select **Copy**.



3. Open the spooler directory within Windows Explorer.
4. Right-click and select **Paste**.



5. The photos will be copied to the **Instant Print Directory** and begin printing.

6. Images are printed and moved to the Printed Folder (*see page 10*).

Printing Photos to Multi-cut Paper

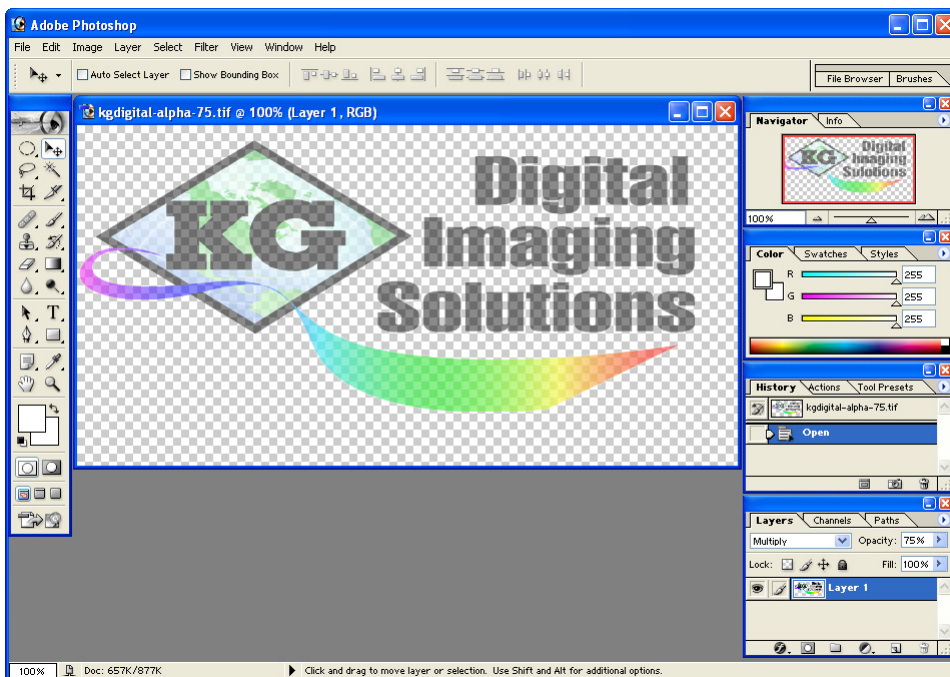
Some photo printers support printing multiple prints using a single set of dye-sublimation panels to reduce ribbon waste. The software has built-in knowledge of which printers support this advanced feature.

If the current paper size supports the multi-cut feature, the software will wait for the necessary number of prints before printing. After the necessary number of prints is received, the software will automatically print the correct number of photos to maximize the multi-cut feature. While the software is waiting for more prints, a **Force Print** button will be displayed notifying the user the software has received photos but is waiting for the proper number of photos to begin printing. The current group photos can be printed immediately by clicking the **Force Print** button.

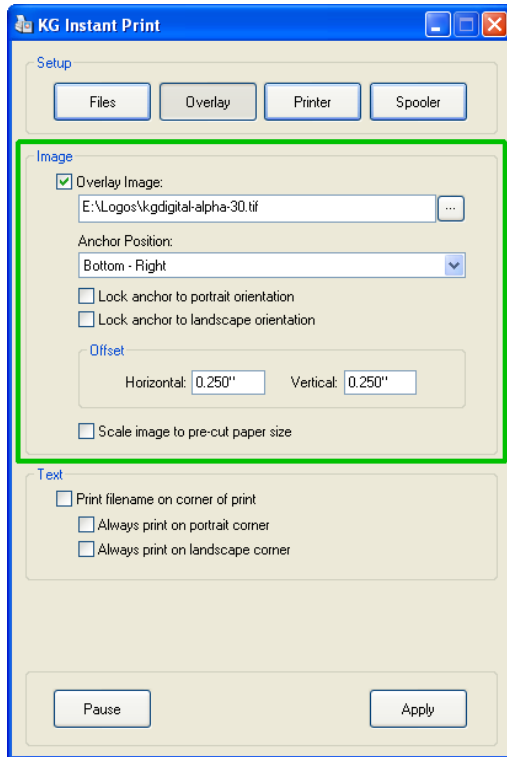
Printing Overlays on Photos

The software supports printing overlay images on top of each photo. Overlays can be the same size as the full print to enable a photo frame print or a simple event watermark can be printed in a corner to advertise a particular event. The overlays can contain alpha transparencies as defined by the TIF and PNG file formats. Adobe Photoshop can be used to create advanced overlays with any number of transparencies. First create and save the overlay in the standard Photoshop file format. When the overlay design is complete, simply select File/Save As within Photoshop and save the overlay to either a TIF or PNG file format. The overlay can now be selected through the KG Instant Print software.

Overlay example:



1. Open Photoshop and design a logo with a transparent background.
2. Lower the opacity of the layer to create an alpha blending effect.
3. In this example the layer's opacity has been lowered to 75%.
4. From Photoshop, select File/Save As to save the file to a TIFF or PNG format.



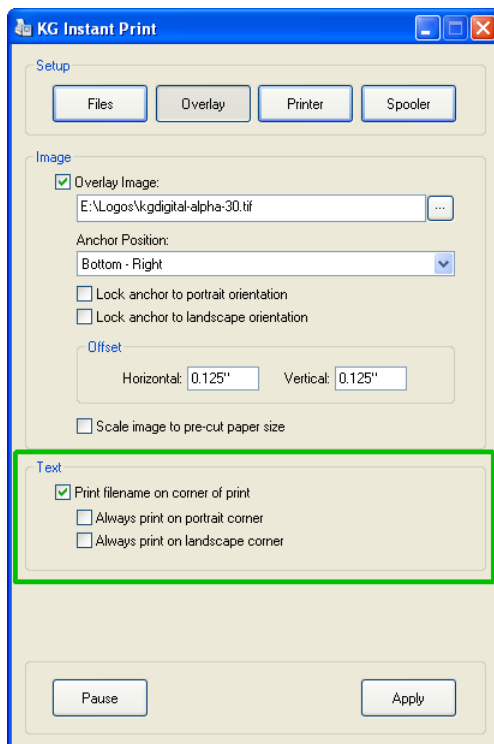
5. From KG Instant Print, select the Overlay page.
6. Click the [...] button and browse to the folder containing the overlay image created in Photoshop. Select the file so it appears as the overlay image.
7. Change the Anchor Position to Bottom–Right.
8. To prevent the overlay from being cropped during printing, change the X/Y offsets to 0.25". This will cause the overlay image to be placed 0.25" from the edge of the pre-cut paper.
9. To test the overlay, copy a sample image to the **Instant Print Directory**.



10. KG Instant Print will print the sample image with the overlay located in the bottom-right corner.

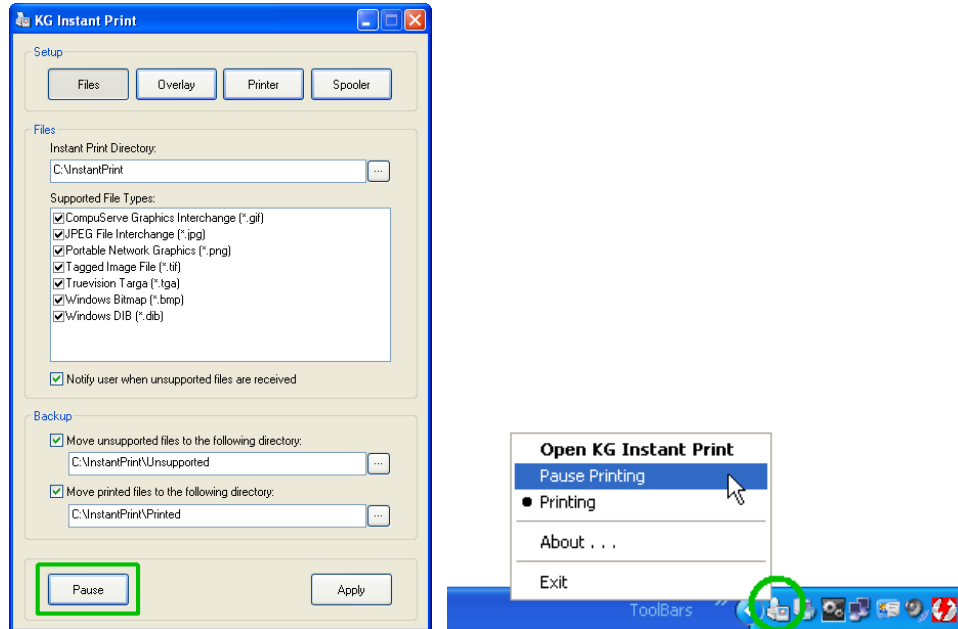
Printing Filenames on Photos

The software can print the filename on the lower right-hand corner of each print to assist in the reprint process. The filename will fit in the lower ¼” of the print and will print on top of the photo and any overlay. This option can be enabled by checking the ‘Print filename on corner of print’ option on the Overlay page.



Pausing Printing

The pause printing option can be used to temporarily pause the printing process. The option is located in the lower left-hand corner of the application window or via the context menu displayed by right-clicking the software's system tray icon.

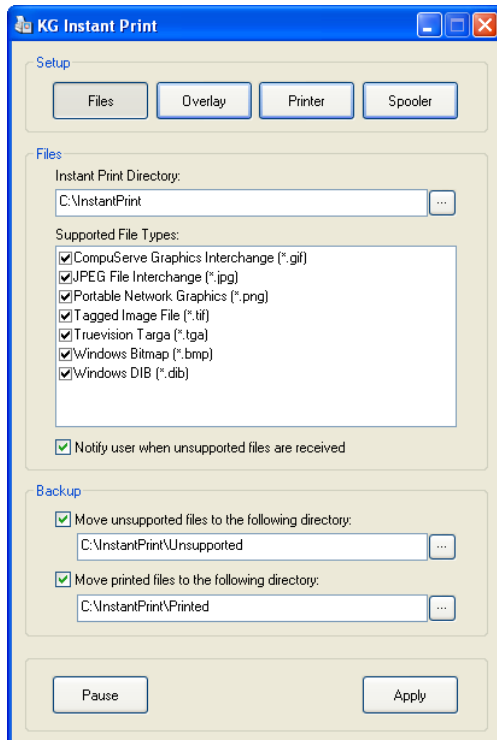


Note: The software will also automatically pause printing if it finds there is a problem with the printer. If the printing process appears to stop, check the status of the photo printer and then click **Resume** to begin printing.

Software Options

Files

The **Files** page contains the options to control the location of the **Instant Print Directory** and the types of files the software should monitor and print.



Instant Print Directory

The **Instant Print Directory** is the location the software monitors for photos. Photos you would like to print should be copied to this directory. The software will print the photos in sequential order based on the file's creation date.

Supported File Types

The Supported File Types contains a list of file types the software is capable of printing. The default setting is to print all supported types. If you wish to disable support for a particular file type, simply clear the check box for the desired type.

Notify user when unsupported files are received

Check this option to instruct the software to display an error message whenever an unsupported file type is copied to the **Instant Print Directory**. If this option is cleared and an unsupported file is received, the software will simply move the file to the Unsupported Directory if the move option has been checked.

Move unsupported files to the following directory

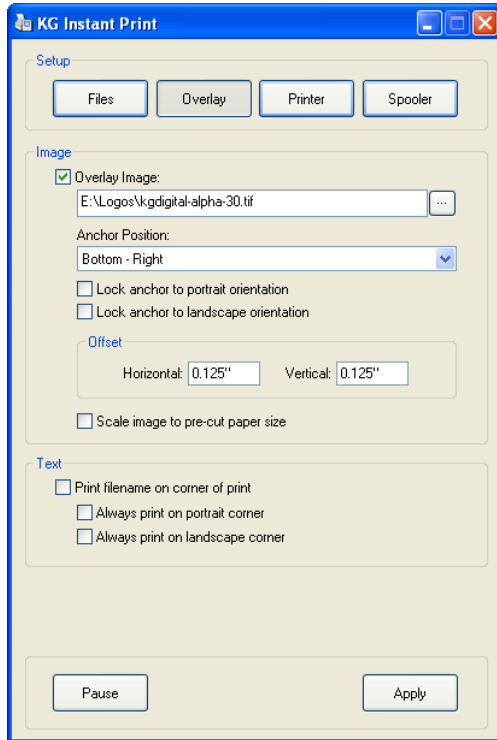
Check this option to instruct the software to move all unsupported files to the specified directory. If this option is cleared, the software will simply delete unsupported files.

Move printed files to the following directory

Check this option to instruct the software to move all printed files to the specified directory. If this option is cleared, the software will simply delete files after they have been printed.

Overlay

The **Overlay** page contains options to control the placement of an image on top of the photo. This option provides powerful capabilities for framed printing and event watermarks.



Overlay Image

Check this option to instruct the software to print the selected overlay image on top of the photo. If checked, browse and select the desired overlay image. Full image transparencies are supported in TIF and PNG files allowing for advanced overlay blending.

Anchor Position

Select the desired anchor position for the overlay image. The anchor position will be constant for all overlay images. The other corners will vary depending on the size of the overlay image.

Lock anchor to portrait orientation

Check this option to force the overlay image to always be positioned relative to the selected 'portrait' position.

Lock anchor to landscape orientation

Check this option to force the overlay image to always be positioned relative to the selected 'landscape' position.

Horizontal/Vertical Offset

Enter the desired offset for the overlay image based on the anchor position. Offsets are used to control the *print margin* of the overlay image to ensure the image is not cropped when the print is cut.

Scale image to pre-cut paper size

If the overlay image is intended to cover the entire print area, select this option to ensure the image is scaled to cover the entire printable area after the print is cut.

Print filename on corner of print

Check this option to instruct the software to print the filename on the corner of each print.

Always print on portrait corner

Check this option to instruct the software to always print the filename on the portrait corner of the print.

Always print on landscape corner

Check this option to instruct the software to always print the filename on the landscape corner of the print.

Printer

The **Printer** page contains the options to control the image formatting and printer settings.

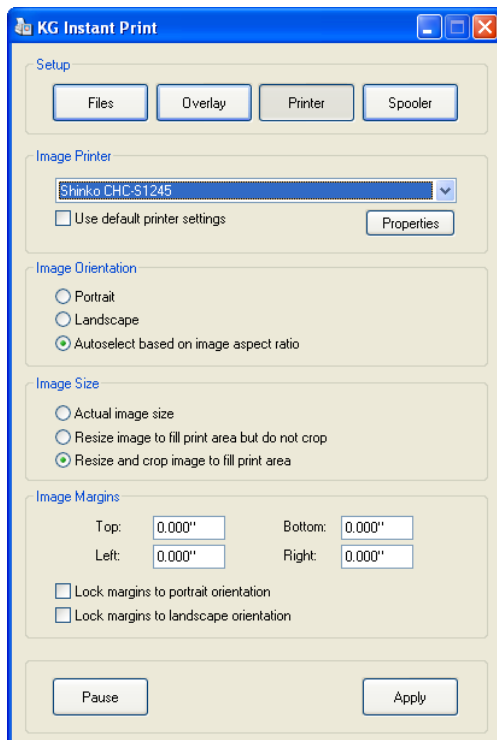


Image Printer

The image printer is the printer used to print the photos. The list will contain only printers supported by the software. If the printer driver is not installed it will not be displayed in the list of supported printers. If your printer driver is installed but it does not appear in the list, it most likely is not supported by the software.

Use default printer settings

Check this option to instruct the software to use the default printer settings as defined by Windows. If you would like to use custom printer settings, click **Properties** to view and change the current printer settings.

Image Orientation

The image orientation controls the rotation of the photo according to the paper size. Generally the 'Autoselect based on image aspect ratio' should be selected to ensure the photo and print orientation match. Select Portrait or Landscape if you would like to lock the print orientation.

Image Margins

The image margins control the placement of the photo on the print. If an overlay image is printed on top of the photo, the photo's placement can be controlled by changing the image margins. The photo will be resized and cropped to fit within the image margins.

Lock margins to portrait orientation

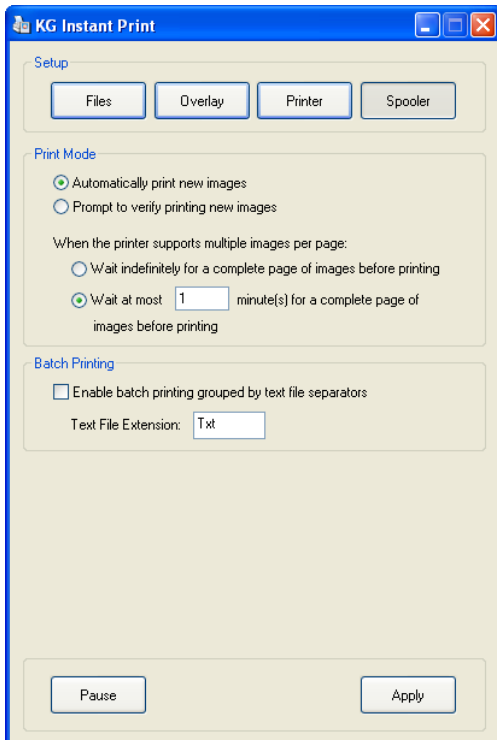
Check this option to lock the image margins relative to the portrait orientation.

Lock margins to landscape orientation

Check this option to lock the image margins relative to the landscape orientation.

Spooler

The **Spooler** page contains the options to control the print spooler monitor.



Print Mode

The print mode option controls how the software responds to photos appearing in the **Instant Print Directory**. The choices are to automatically print the photos or to prompt the user each time a photo is placed in the **Instant Print Directory**. If prompting is enabled and a user decides not to print a photo, the photo will simply be moved to the Printed directory.

When the current print size supports the multi-cut feature, the software can be configured to either wait indefinitely for the correct number of prints to maximize the consumable usage or to wait for the specified number of minutes before printing. If the software is configured to 'Wait at most x minute(s) for complete page if images before printing', the software will wait the specified amount of time and then print the current list of images.

Batch Printing

The batch printing option enables a separator page to be placed between batches of prints. The batch printing feature is accomplished by first copying a separator page to the **Instant Print Directory** immediately followed by a batch of photos. The separator page is usually a text file with a .Txt extension. The software will print the contents of the separator text file followed by the group of photos. The printed batches can then be identified by the separator page groupings.