



Shinko CHC-S1245 Software Installation and Users Guide Version 3

(Support for 8x12 Media)

Provided by:

Kanematsu USA, Inc.
100 Randolph Road
Somerset, NJ 08873



For Technical support contact (800) 597-4351

Shinko CHC-S1245 Software Installation and Users Guide

Provided by: Kanematsu USA, Inc.
100 Randolph Road
Somerset, NJ 08873
(800) 597-4351

Thank you for purchasing a Shinko Printer!
This guide will explain how to install and use the enclosed Windows Driver and help you optimize your photo printing.

This guide is not designed to replace the Operation Manual included with the printer or available on the www.kgdigital.com website support page. You must register to open the support page. For more information on the printer and its features and settings, please refer to the Operation Manual included with your printer. It is important that you read the Operation Manual to ensure that you use this printer safely.

In order for KGDigital to properly support your product, we ask that you complete the Warranty Registration Card included with your printer or visit our website: www.kgdigital.com and register online.

Step 1: Unpack and Setup Printer

Unpack printer and load paper and ribbon as shown in the Operation Manual.

Turn on and Plug printer into computer with a USB Cable (not included). Plug into a High Speed USB2 port for maximum performance. Standard USB1 can be used with much slower data transfer times. If Windows finds printer and prompted you to install and search for the driver click on cancel. **Driver must be installed using the install program in step #2.**

Step 2: Install Driver Software

Double Click on the Driver for the Shinko CHC-S1245 on the CD provided. If no CD was provided drive can be download from the www.kgdigital.com website support page. You must register to open the support page. A newer version of the printer driver may be available for download from the website.

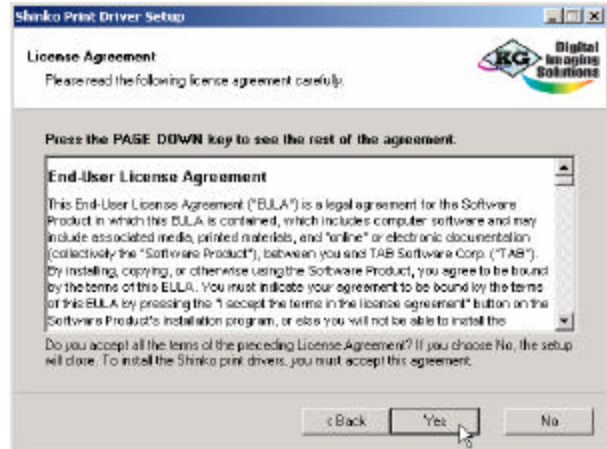


Click the **Setup** button to start the installation

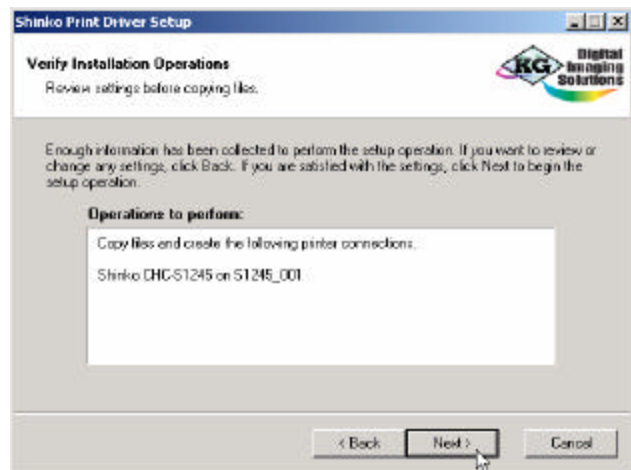
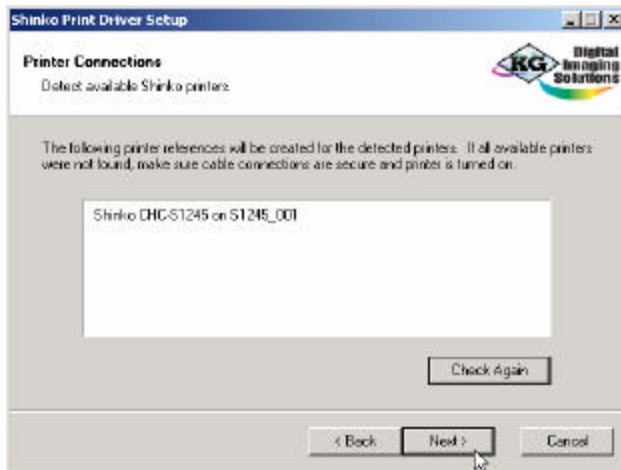


Click **Next** to Start the installation.

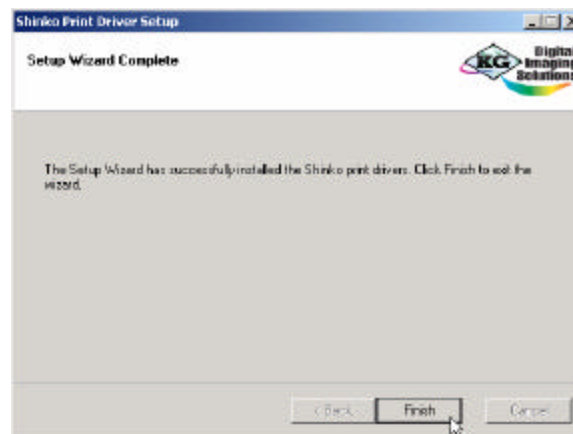
You must agree to the terms of the License Agreement by clicking **Yes** to continue.



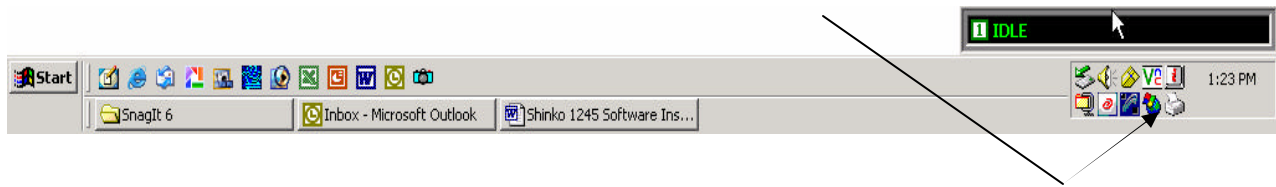
The printer should be automatically detected and will appear in the window. If it appears click **Next** to continue. If not detected check your connections and click **Check Again** then next when it is found. Click **Next** verify installation when prompted.



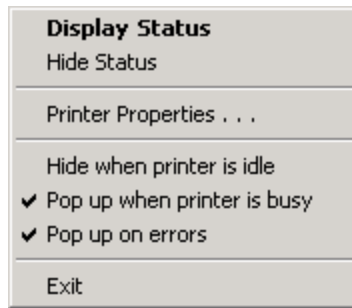
Installation will automatically load in necessary files. When completed click **Finish** to complete the installation and you will be ready to print.



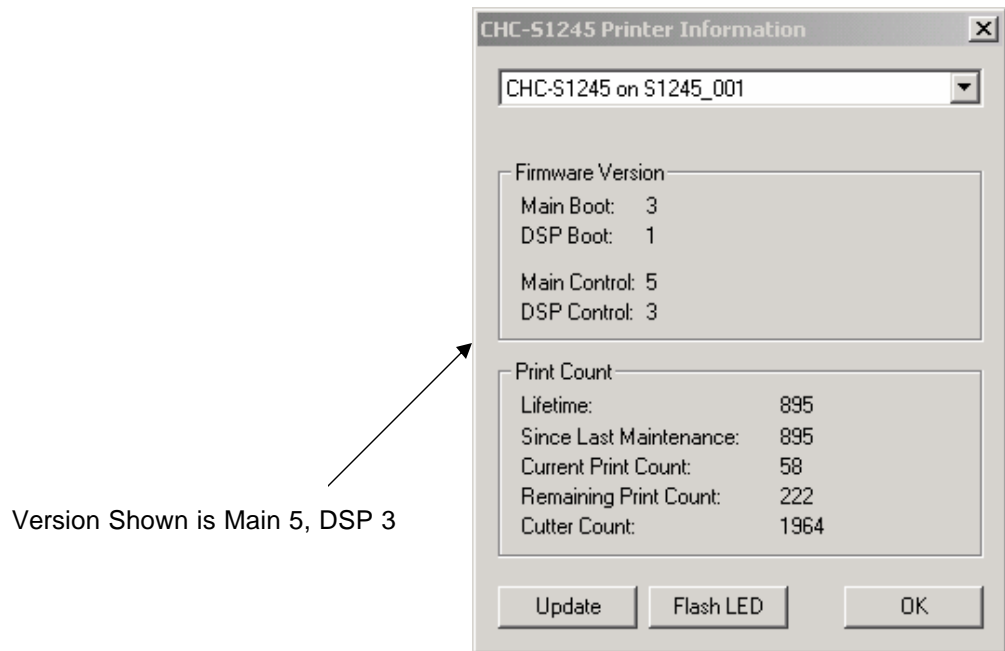
Upon installation, the Shinko CHC-S1245 printer Icon will be loaded onto your system tray. A status box will be displayed showing the status of the printer.



If you right click on the Shinko CHC-S1245 printer Icon in the system tray, you see the following options:



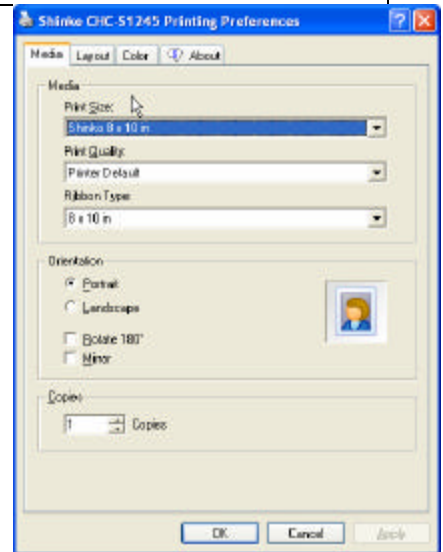
Click on **Printer Properties** will show you the Firmware Version, and Print Count information.



Step 3: Printing

Using any Windows program you can print on the Shinko CHC-S1245 Printer.

Select the Shinko CHC-S1245 Printer and then click on the Printer Setup button to change the printer settings if needed.



Step 4: Print Size, Print Quality, Orientation & Copies

In the Media Section you can select the print size by first selecting the ribbon type loaded. The Shinko CHC-S1245 Printer can use both 8x10 and 8x12 media.

After selecting the ribbon size, select the print size. The print sizes displayed will be different depending on the ribbon size selected.

Please note:

The printer uses 8" roll paper and ribbon with 8"x10" or 8"x12" color patches (Y,M,C,OC). Making a print less than an 8"x10" will only use part of the ribbon patch unless multiple images are printed at the same time.

With 8x10 Media you can print:

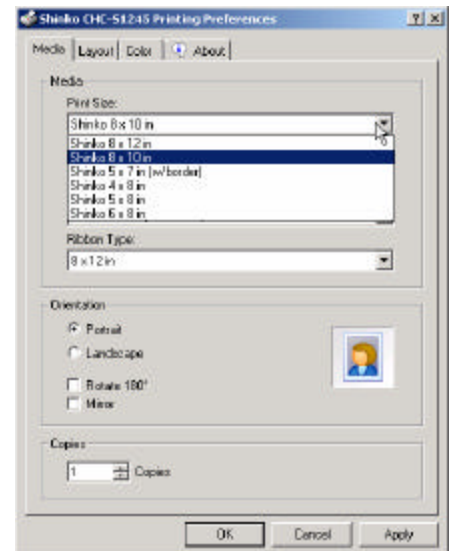
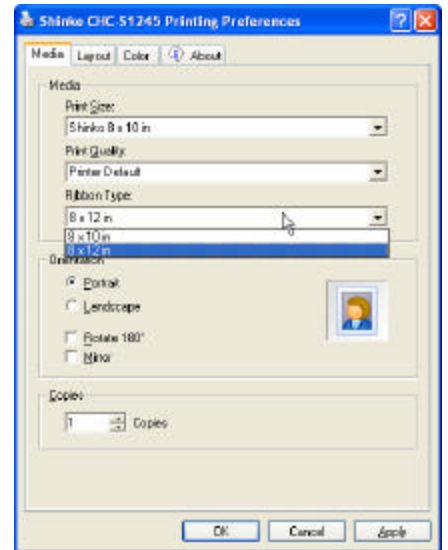
- 1 – 8x10
- 1 – 6x8
- 2 – 5x8's
- 2 – 5x7's WB
- 2 – 4x8's

With 8x12 Media you can print:

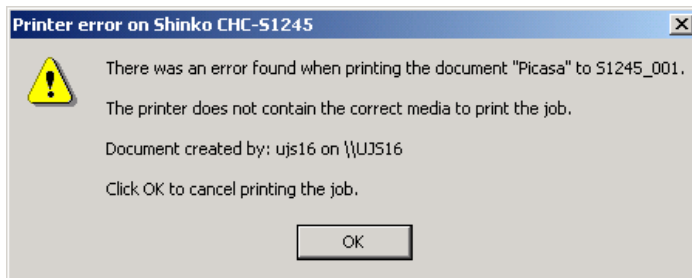
- 1 – 8x12
- 1 – 8x10
- 2 – 6x8's
- 2 – 5x8's
- 2 – 5x7's WB
- 3 – 4x8's

The multiple images will be cut to the proper width automatically. Note that 5x7 prints will be printed on 8" wide paper and must be trimmed manually to size.

If you are sending only 1 image you can select 2 copies and 2 of the same image will be printed.



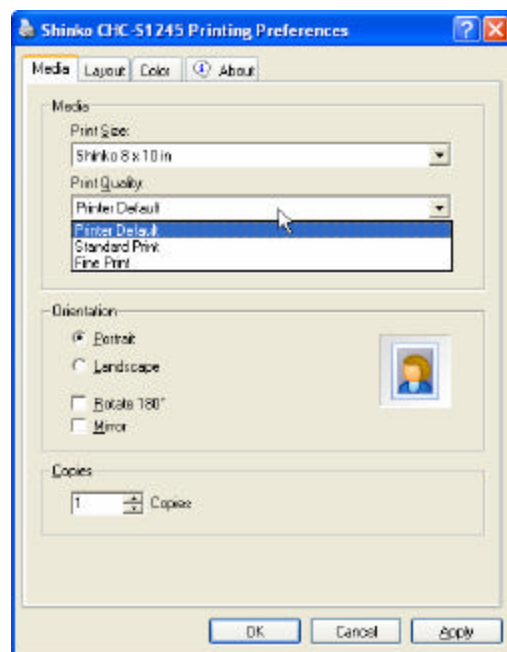
****Please note that if attempting to print an 8x12 using 8x10 media the following error message will be displayed. Change the ribbon to the proper size or select a different print size to print.**



Print Quality:

You can select Standard Print Quality, Fine Print Quality or Printer Default mode.

Note: The Printer Default mode uses the setting on the printer, which is set manually. The printer will print whatever is selected in the driver even if the printer is manually set for a different mode.



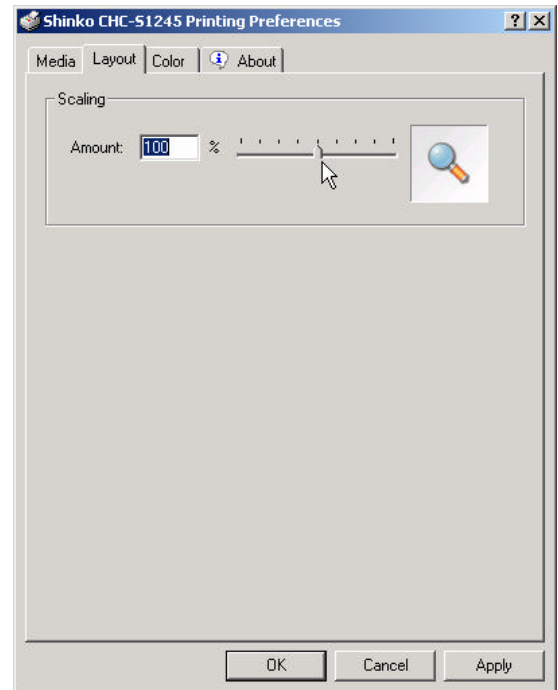
Step 5: Layout

Changing the **Scaling** will increase the amount of overspill or borders created.

Note:

Some photo software will send an exact 8"x10" image resulting in a thin white edge on 1-2 sides of the print. If white lines appear increase the scaling to 101% or 102% to eliminate the white lines. Increasing the print size to 8.1"x10.1" should eliminate the white edges as well/

To create a white bordered print reduce the scaling to 90% - 95%,



Step 6: Color Adjustment

Image Color Management

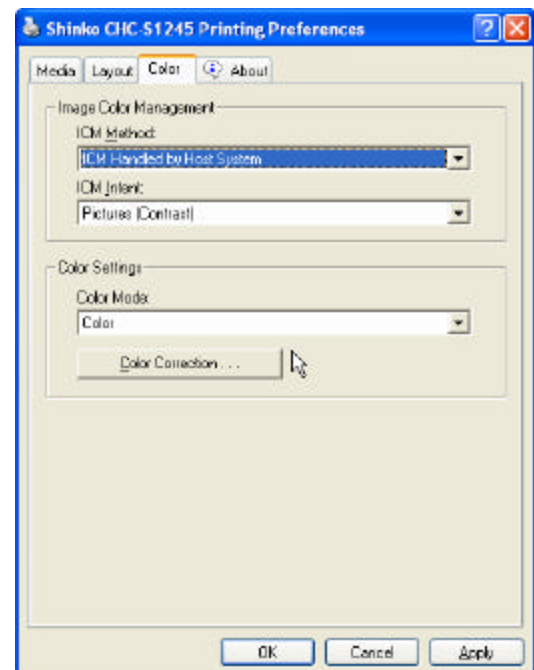
– See Advanced Step #10 & #11

Color Settings

To print in **Color** or **Gray Scale** click on the **Color Mode**

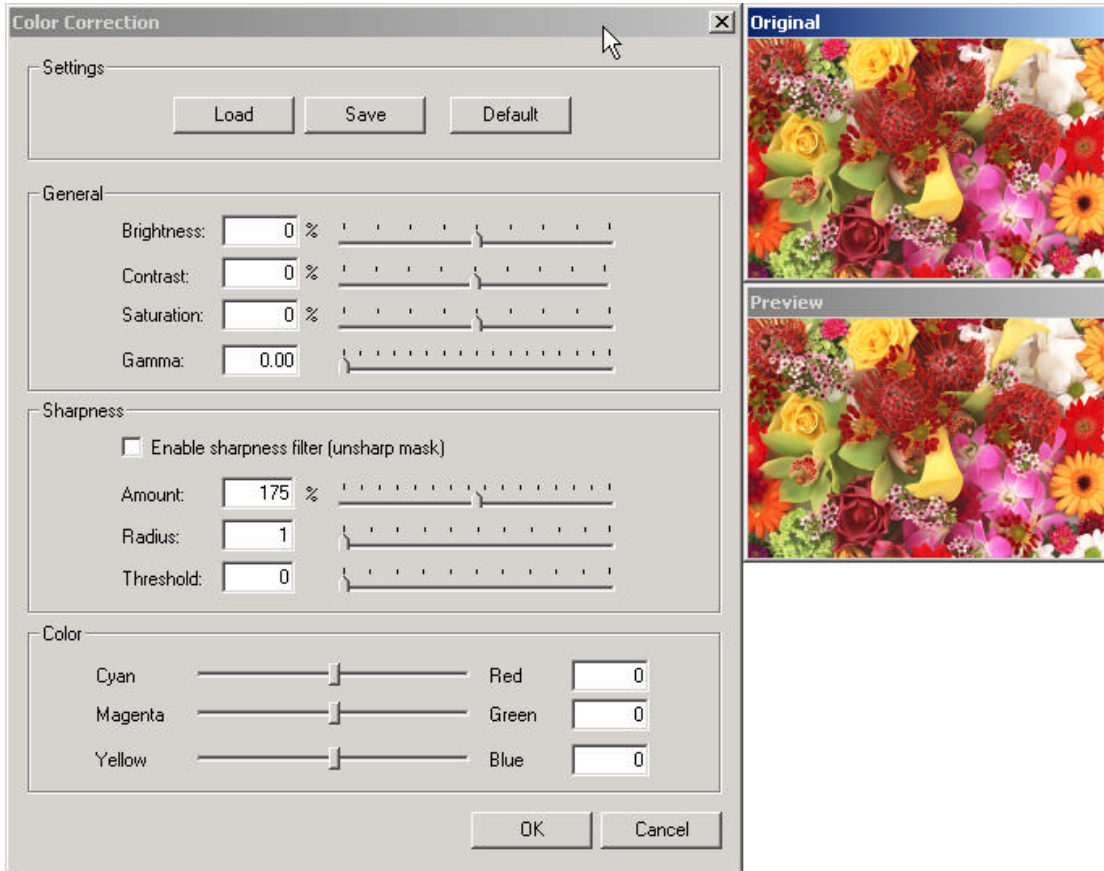
Color Correction

To adjust color click on the **Color Tab**, then click on the **Color Correction Settings** button.



The Color Correction window will open up showing the corrections you can make plus a photo with an original and preview view. The Preview view will change as you make your corrections.

Hint: To produce a grayscale image slide the Saturation slider all the way to the left (-100%)



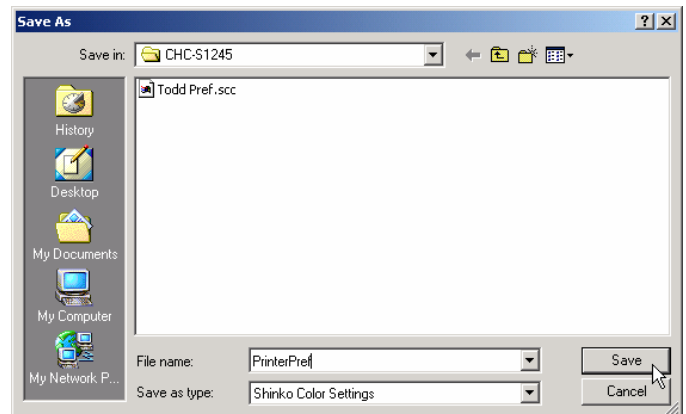
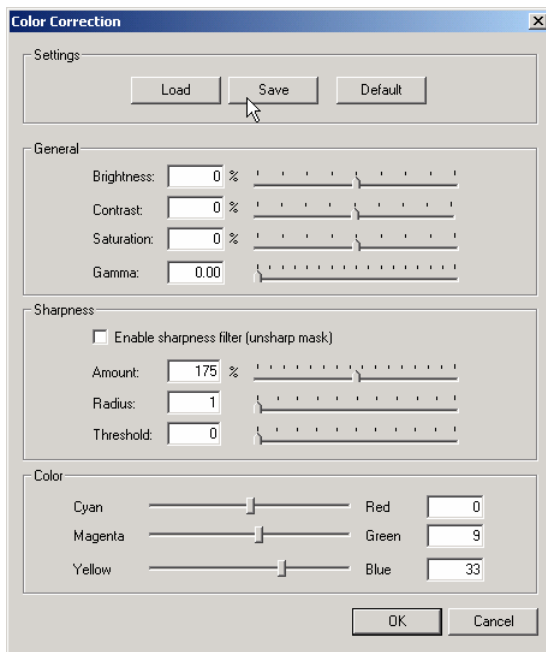
Step 7: Saving Changes / Creating Profiles

Corrections can be saved to create custom profiles.

After making changes click **Save** to save the profile. Name the profile and select where to save it. An unlimited number of profiles can be saved.

Clicking on **Default** will reset all changes.

To Select a profile previously saved click **Load** and select the previously saved profile.



Step 8: Version Information

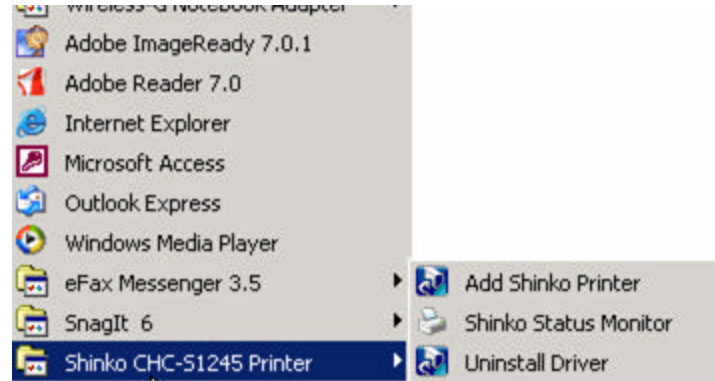
Click on the **About** tab to see the version of the driver installed.



Step 9: Advanced Features – Adding Additional Printer

Installing more than one printer or adding a printer to the server.

Click on **Add Shinko Printer**. This will take you through the installation process and add a 2nd printer.



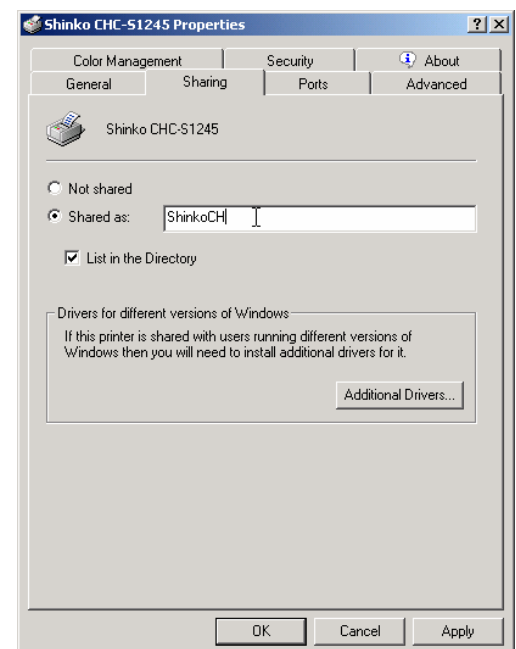
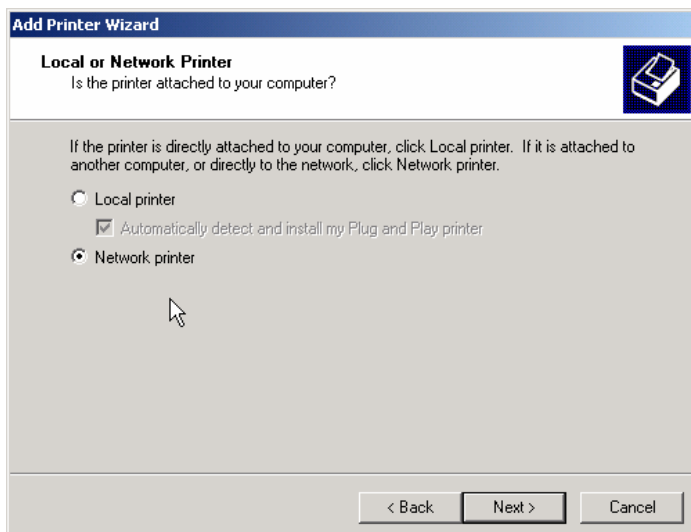
Step 10: Advanced Features – Adding Printer to Network

Installing on a network

Printer must be shared on the host computer.

Enable Sharing in the Printer Properties on the host computer.

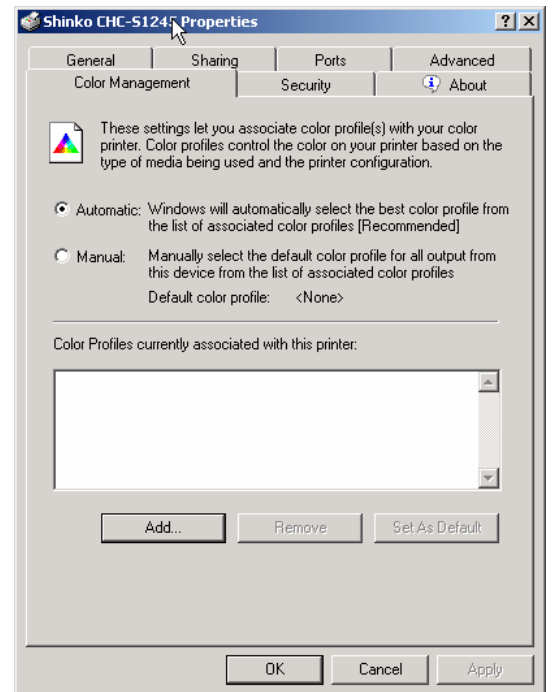
Click on Add Printer from the Printer folder and have Windows search for a Network Printer. When printer is found follow the Add Printer Wizard steps to finish the installation.



Step 10: Advanced Features – Adding Color Profiles

In the computer printer folder right click on the Shinko CHC-S1245 printer and select printer Properties.

To load custom color profiles, click on **Color Management** tab then click on the **Add** button to load the profile.



Step 11: Advanced Features – Image Color Management

'Image Color Management' (ICM) is the setting to control the use of the color profile selected on the 'Color Management' tab. A color profile must be created first.

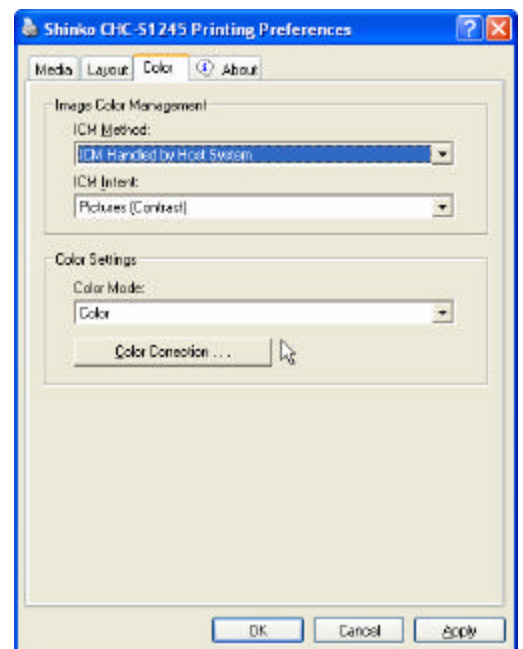
ICM Method:

ICM Disabled The driver will disable the use of the selected color profile on the 'Color Management' tab.

ICM Handled by Printer The color management is handled by the Printer. This is recommended for profiles optimized for the printer. The driver will use of the color profile on the 'Color Management' tab.

ICM Handled by Host System The driver will enable color management using Microsoft Windows Color Profiles. The driver will use the color profile on the 'Color Management' tab.

Note: You should set the ICM Method to ICM Disabled if you are printing from software that performs its own color management. Such software might include Adobe Photo Shop. Incorrect coloring will occur if both software and printer driver perform color management. This is because the software will color correct according to its algorithm and then pass the color corrected image to the driver which then re-corrects the color according to the selected color profile causing a 'double correction' to occur.



ICM (Rendering) Intent

The International Color Consortium (ICC) has defined four different values called *rendering intents*. These represent four different approaches to creating a color rendering. These four intents, and the constants used to refer to them in code are as follows.

Intent	ICC Name	Description
Picture	Perceptual	INTENT_PERCEPTUAL
Graphic	Saturation	INTENT_SATURATION
Proof	Relative Colorimetric	INTENT_RELATIVE_COLORIMETRIC
Match	Absolute Colorimetric	INTENT_ABSOLUTE_COLORIMETRIC

The ICC Profile Format Specification Version 3.4, which describes these intents, can be downloaded from the following Internet address: <http://www.color.org>

Picture Intent

This intent is most suitable for display of photographs and images, and is generally the default intent.

Called perceptual intent in the ICC specification clause 4.9, a Picture intent causes the full gamut of the image to be compressed or expanded to fill the gamut of the destination device, so that gray balance is preserved but colorimetric accuracy may not be preserved.

Graphic Intent

This intent is most suitable for business graphics such as charts, where it is more important that the colors be vivid and contrast well with each other rather than a specific color.

The ICC specification clause 4.12 calls the Graphic intent a saturation intent. It preserves the saturation of colors in the image at the possible expense of hue and lightness.

Proof Intent

Proof intent does not preserve the white point.

The Proof intent, called the colorimetric intent in the ICC specification, is defined such that any colors that fall outside the range that the output device can render are adjusted to the closest color that can be rendered, while all other colors are left unchanged.

Match Intent

Match intent preserves the white point.

In a Match intent, any colors that fall outside the range that the output device can render are adjusted to the closest color that can be rendered, while all other colors are left unchanged. The ICC specification calls the match intent absolute colorimetric intent.